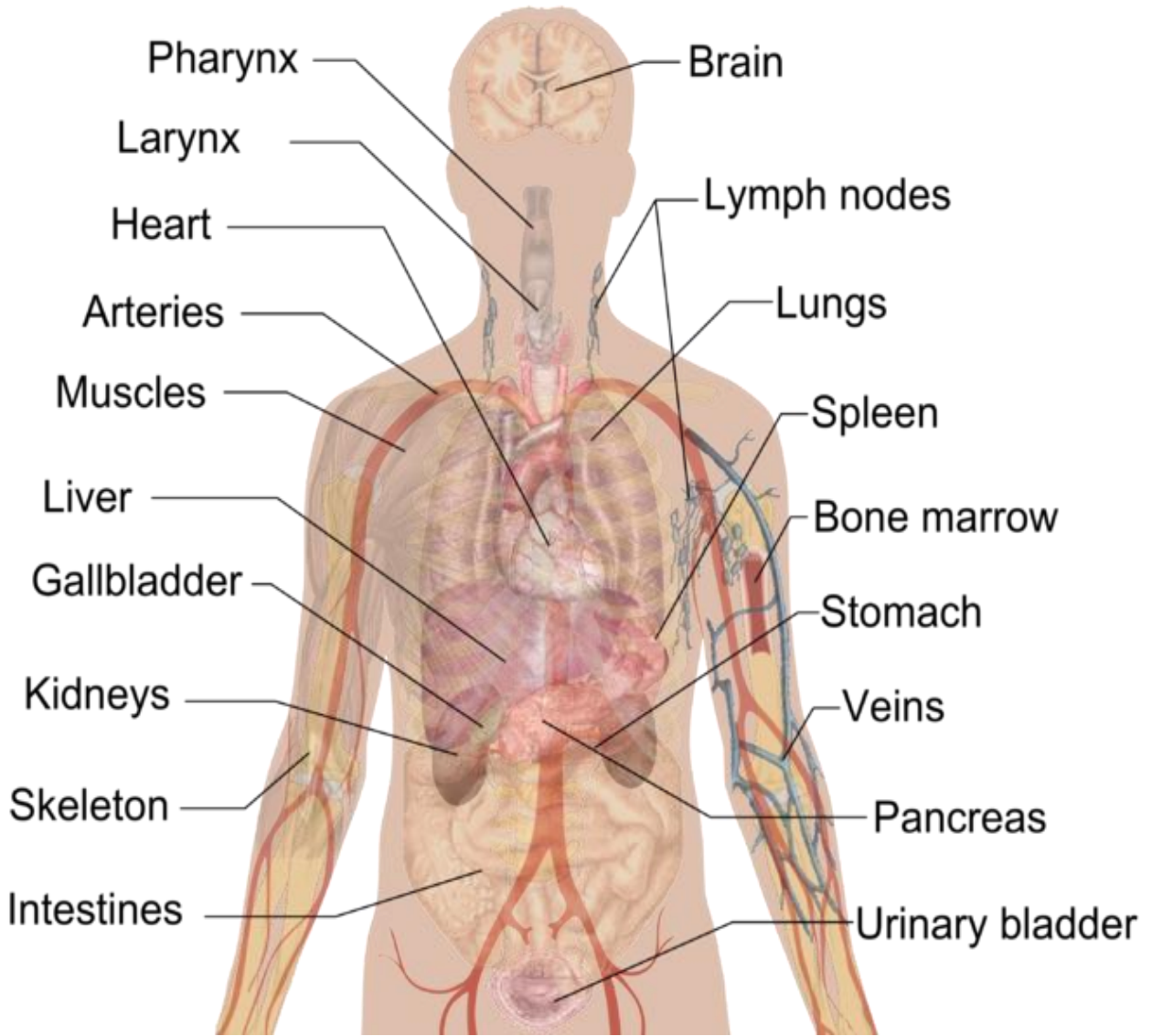
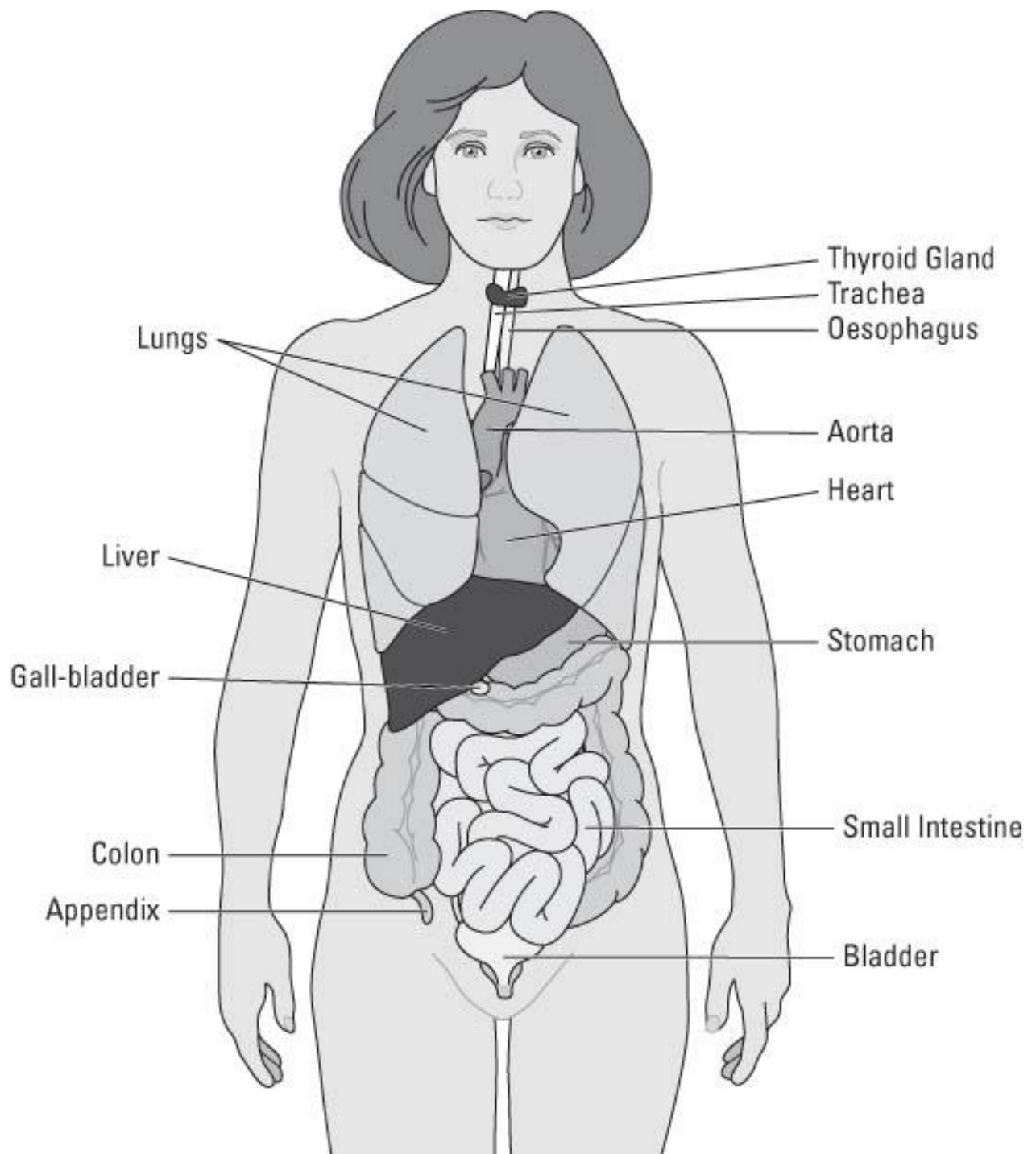
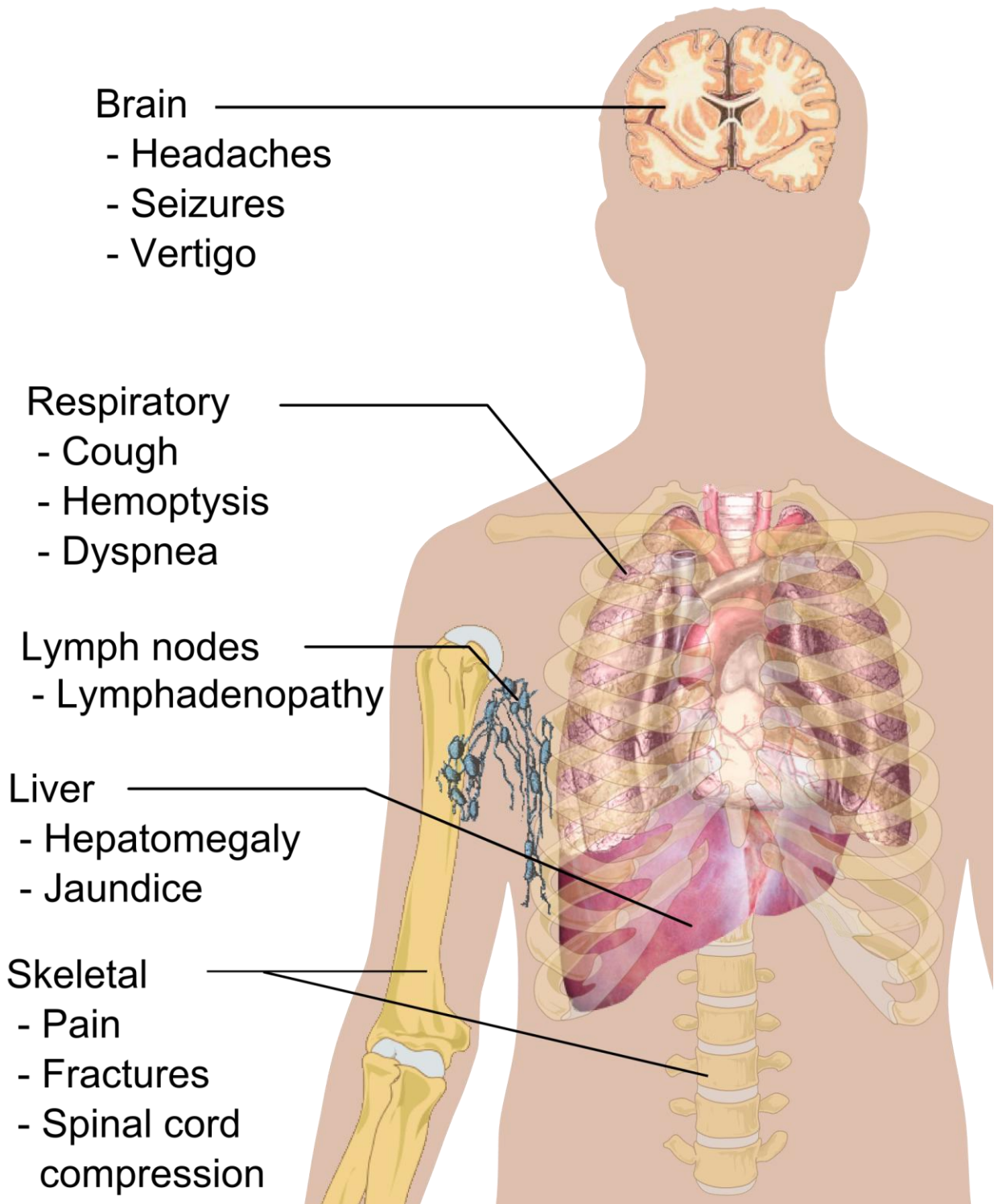


Human anatomy





Common sites and symptoms of Cancer metastasis



http://en.wikipedia.org/wiki/List_of_cancer_types

List of cancer types

From Wikipedia, the free encyclopedia

Jump to: [navigation](#), [search](#)

This is a **list of [cancer](#) types**, ordered alphabetically.

Contents

[A](#) [B](#) [C](#) [D](#) [E](#) [F](#) [G](#) [H](#) [I](#) [J](#) [K](#) [L](#) [M](#) [N](#) [O](#) [P](#) [Q](#) [R](#) [S](#) [T](#) [U](#) [V](#) [W](#) [X](#) [Y](#) [Z](#)

A

- [Acute lymphoblastic leukemia](#) (ALL)
- [Acute myeloid leukemia](#)
- [Adrenocortical carcinoma](#)
- [AIDS-related cancers](#)
- [AIDS-related lymphoma](#)
- [Anal cancer](#)
- [Appendix cancer](#)
- [Astrocytoma](#), childhood [cerebellar](#) or [cerebral](#)

B

- [Basal-cell carcinoma](#)
- Bile duct cancer, extrahepatic (see [Cholangiocarcinoma](#))
- [Bladder cancer](#)
- [Bone tumor](#), [Osteosarcoma](#)/[Malignant fibrous histiocytoma](#)
- [Brainstem glioma](#)
- Brain cancer
- Brain tumor, [cerebellar astrocytoma](#)
- Brain tumor, cerebral astrocytoma/malignant glioma
- Brain tumor, [ependymoma](#)
- Brain tumor, [medulloblastoma](#)
- Brain tumor, supratentorial primitive neuroectodermal tumors
- Brain tumor, visual pathway and hypothalamic glioma
- [Breast cancer](#)
- Bronchial [adenomas](#)/[carcinoids](#)
- [Burkitt's lymphoma](#)

C

- [Carcinoid tumor](#), childhood
- Carcinoid tumor, gastrointestinal
- [Carcinoma](#) of unknown primary
- [Central nervous system lymphoma, primary](#)
- Cerebellar [astrocytoma](#), childhood
- Cerebral astrocytoma/[Malignant glioma](#), childhood
- [Cervical cancer](#)
- [Childhood cancers](#)
- [Chronic lymphocytic leukemia](#)

- [Chronic myelogenous leukemia](#)
- Chronic [myeloproliferative disorders](#)
- [Colon Cancer](#)
- [Cutaneous T-cell lymphoma](#)

D

- [Desmoplastic small round cell tumor](#)

E

- [Endometrial cancer](#)
- [Ependymoma](#)
- [Esophageal cancer](#)
- [Ewing's sarcoma](#) in the Ewing family of tumors
- Extracranial germ cell tumor, Childhood
- Extragonadal [Germ cell tumor](#)
- Extrahepatic [bile duct cancer](#)
- [Eye Cancer](#), [Intraocular melanoma](#)
- Eye Cancer, [Retinoblastoma](#)

G

- [Gallbladder cancer](#)
- [Gastric \(Stomach\) cancer](#)
- Gastrointestinal Carcinoid Tumor
- [Gastrointestinal stromal tumor](#) (GIST)
- [Germ cell tumor](#): extracranial, extragonadal, or ovarian
- [Gestational trophoblastic tumor](#)
- [Glioma](#) of the brain stem
- Glioma, Childhood Cerebral Astrocytoma
- Glioma, Childhood Visual Pathway and Hypothalamic
- Gastric carcinoid

H

- [Hairy cell leukemia](#)
- [Head and neck cancer](#)
- [Heart cancer](#)
- [Hepatocellular \(liver\) cancer](#)
- [Hodgkin lymphoma](#)
- [Hypopharyngeal cancer](#)
- Hypothalamic and visual pathway glioma, childhood

I

- [Intraocular Melanoma](#)
- [Islet Cell Carcinoma](#) (Endocrine Pancreas)

K

- [Kaposi sarcoma](#)
- [Kidney cancer](#) (renal cell cancer)

L

- [Laryngeal Cancer](#)
- [Leukemias](#)
- [Leukemia, acute lymphoblastic](#) (also called acute lymphocytic leukemia)
- [Leukemia, acute myeloid](#) (also called acute myelogenous leukemia)

- [Leukemia, chronic lymphocytic](#) (also called chronic lymphocytic leukemia)
- [Leukemia, chronic myelogenous](#) (also called chronic myeloid leukemia)
- [Leukemia, hairy cell](#)
- Lip and Oral Cavity Cancer
- [Liposarcoma](#)
- [Liver Cancer](#) (Primary)
- [Lung Cancer](#), Non-Small Cell
- Lung Cancer, Small Cell
- [Lymphomas](#)
- [Lymphoma, AIDS-related](#)
- [Lymphoma, Burkitt](#)
- [Lymphoma, cutaneous T-Cell](#)
- [Lymphoma, Hodgkin](#)
- [Lymphomas, Non-Hodgkin](#) (an old classification of all [lymphomas](#) except Hodgkin's)
- Lymphoma, Primary Central Nervous System

M

- [Macroglobulinemia](#), Waldenström
- Malignant Fibrous Histiocytoma of Bone/Osteosarcoma
- [Medulloblastoma](#), Childhood
- [Melanoma](#)
- Melanoma, Intraocular (Eye)
- [Merkel Cell Carcinoma](#)
- [Mesothelioma](#), Adult Malignant
- Mesothelioma, Childhood
- Metastatic Squamous Neck Cancer with Occult Primary
- [Mouth Cancer](#)
- Multiple Endocrine Neoplasia Syndrome, Childhood
- [Multiple Myeloma/Plasma Cell Neoplasm](#)
- [Mycosis Fungoides](#)
- Myelodysplastic Syndromes
- Myelodysplastic/Myeloproliferative Diseases
- [Myelogenous Leukemia, Chronic](#)
- [Myeloid Leukemia, Adult Acute](#)
- Myeloid Leukemia, Childhood Acute
- [Myeloma, Multiple \(Cancer of the Bone-Marrow\)](#)
- [Myeloproliferative Disorders](#), Chronic

N

- Nasal cavity and paranasal sinus cancer
- [Nasopharyngeal carcinoma](#)
- [Neuroblastoma](#)
- [Non-Hodgkin lymphoma](#)
- [Non-small cell lung cancer](#)

O

- [Oral Cancer](#)
- [Oropharyngeal cancer](#)
- Osteosarcoma/malignant fibrous histiocytoma of bone

- [Ovarian cancer](#)
- Ovarian epithelial cancer ([Surface epithelial-stromal tumor](#))
- Ovarian [germ cell tumor](#)
- Ovarian low malignant potential tumor

P

- [Pancreatic cancer](#)
- Pancreatic cancer, islet cell
- Paranasal sinus and nasal cavity cancer
- [Parathyroid cancer](#)
- [Penile cancer](#)
- [Pharyngeal cancer](#)
- [Pheochromocytoma](#)
- [Pineal astrocytoma](#)
- [Pineal germinoma](#)
- [Pineoblastoma](#) and supratentorial primitive neuroectodermal tumors, childhood
- [Pituitary adenoma](#)
- Plasma cell neoplasia/[Multiple myeloma](#)
- [Pleuropulmonary blastoma](#)
- Primary central nervous system lymphoma
- [Prostate cancer](#)

R

- [Rectal cancer](#)
- [Renal cell carcinoma](#) (kidney cancer)
- Renal pelvis and ureter, transitional cell cancer
- [Retinoblastoma](#)
- [Rhabdomyosarcoma](#), childhood

S

- [Salivary gland cancer](#)
- [Sarcoma, Ewing family of tumors](#)
- [Sarcoma, Kaposi](#)
- Sarcoma, soft tissue
- Sarcoma, uterine
- [Sézary syndrome](#)
- [Skin cancer](#) (nonmelanoma)
- [Skin cancer](#) (melanoma)
- [Skin carcinoma, Merkel cell](#)
- Small cell lung cancer
- Small intestine cancer
- Soft tissue sarcoma
- Squamous cell carcinoma – see Skin cancer (nonmelanoma)
- Squamous neck cancer with occult primary, metastatic
- [Stomach cancer](#)
- Supratentorial primitive [neuroectodermal tumor](#), childhood

T

- T-Cell lymphoma, cutaneous – see Mycosis Fungoides and Sézary syndrome
- [Testicular cancer](#)

- [Throat cancer](#)
- [Thymoma](#), childhood
- Thymoma and [Thymic carcinoma](#)
- [Thyroid cancer](#)
- Thyroid cancer, childhood
- Transitional cell cancer of the renal pelvis and ureter
- [Trophoblastic tumor](#), gestational

U

- Unknown primary site, [carcinoma](#) of, adult
- Unknown primary site, cancer of, childhood
- Ureter and renal pelvis, [transitional cell](#) cancer
- [Urethral cancer](#)
- [Uterine cancer](#), endometrial
- [Uterine sarcoma](#)

V

- [Vaginal cancer](#)
- Visual pathway and hypothalamic [glioma](#), childhood
- [Vulvar cancer](#)

W

- [Waldenström macroglobulinemia](#)
- [Wilms tumor](#) (kidney cancer), childhood

References

- [A to Z List of Cancers National Cancer Institute](#)

OTHER REFERENCE SITES;

<http://www.nlm.nih.gov/medlineplus/healthtopics.html>